



COMPACT PLATFORM **FTB-200** BUILT FOR THE SUPERTECH

www.exfo.com

Telecommunications Test and Measurement

EXFO

EXPERTISE REACHING OUT



THE FTB-200 COMPACT PLATFORM

TESTING, TROUBLESHOOTING, RESOLVING

EXFO's newest **compact platform** was designed to address virtually any network testing scenario a technician could meet in the field. We created this **versatile tool** with an open architecture, backward-compatibility and powerful, world-leading testing technologies.

Lightweight

- 2.2 kg/4.8 lb platform

Fast and powerful

- 4-second power-up time with Windows CE/mobile
- Faster acquisition, processing and reporting
- Instantaneous AutoSync USB data transfer

Flexible connectivity

- File transfer and software upgrading through USB
- USB A/A-B, RJ-45 and Bluetooth flexibility
- Compact Flash (memory, Wi-Fi and Bluetooth)

Built for the outside plant

- Waterproof outer shell, sealed joints, door panels for extra port protection
- Advanced TFT transfective display—for great visibility under direct sunlight
- Rugged shortkeys and tracking knob
- GR-196-CORE
- Extended battery life of more than 8 hours for the OTDR



Modularity for a wide range of test combinations



Choose your method:
touchscreen or
convenient **shortkeys**



Numerous ports mean easy
connectivity and convenient
upgrading options



BUILT FOR THE SUPERTECH

RISING TO THE CHALLENGE

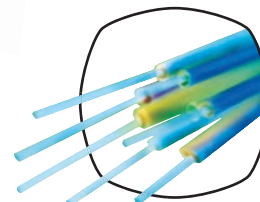
Testing today's networks requires a supertech. EXFO understands that technicians need to span various mediums, layers and technologies. With this reality in mind, EXFO designed the FTB-200 Compact Platform for **multilayer, multimedium testing**.

- OTDR, SONET/SDH, Ethernet and OLTS testing capabilities
- 2-slot modular configuration for numerous test combinations

TESTING METRO/ACCESS AND FTTx NETWORKS

The FTB-200 was designed for supertechs in the field that perform tests on optical fiber and copper for **metro/access and FTTx networks**. This task requires a compact platform optimized for time-efficient automated tests and in-depth troubleshooting and analysis.

Whether you are testing triple-wavelength insertion loss at the CO or testing data integrity at the core, the FTB-200 has the power, speed and compactness that you need in the field.





MULTILAYER AND MULTIMEDIUM TESTING

ADAPTING THROUGH MODULARITY

A vital strength of the supertech lies in the resources at hand and ability to adapt quickly. The FTB-200 has an open architecture that provides abundant options and excellent adaptability for multimedium and multilayer testing.

The FTB-200 is the most complete compact platform on the market. Equipped with testing applications covering both **fiber-optic and copper mediums**, supertechs will find that they need only one tool to complete the most important testing and troubleshooting tasks.

FEATURING A WORLD-RENOWNED OTDR SERIES

Testing and troubleshooting will be considerably more efficient with the most trusted OTDR in the industry at your reach. EXFO offers over 20 OTDR modules to meet your long-haul, metro/access and FTTx needs. Other features of our OTDR series include:

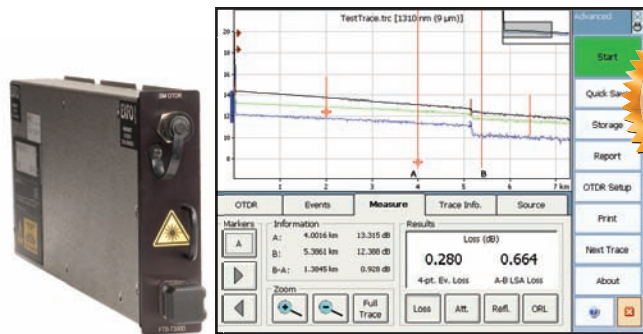
- Modules that test up to four wavelengths
- Industry's fastest acquisition times
- FTTx-optimized modules that combine multimode and singlemode test functions
- Shortest dead zones in the industry

TESTING PHYSICAL, TRANSPORT AND DATACOM LAYERS

Using transport and datacom analyzers, you can test the latest standards of Ethernet and Next-Generation SONET/SDH networks using generic framing procedure (GFP), virtual concatenation (VCAT), link capacity adjustment scheme (LCAS) and Ethernet-over-SONET/SDH (EoS) functionalities.



2005 Frost & Sullivan Product Line Strategy Award in the
Metro Area Network Test Equipment Market



FTB-7000 OTDR B/C/D series

Exceptional 1 m event dead zone, perfect for metro/access and FTTH network testing; tests at 1310, 1490, 1550 and 1625 nm. Pinpoint measurements—what you need for first-class multimode/singlemode OTDR performance.

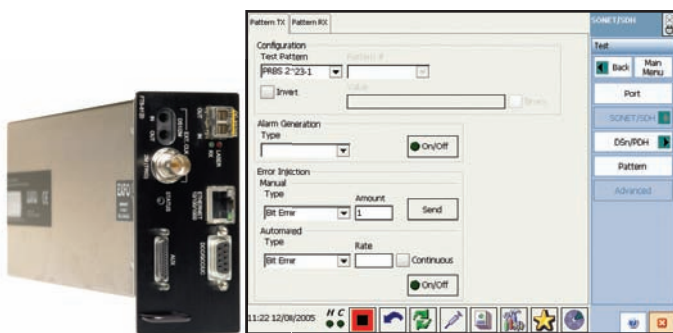
- 1 m event dead zone/ 4 m attenuation dead zone
- Market-leading linearity of ± 0.03 dB/dB for accurate event characterization
- Triple-wavelength configurations: 1310/1490/1550 nm or 1310/1550/1625 nm



FTB-8510 Packet Blazer Ethernet Test Module (Datacom 10/100/1000 Mb/s) (available in Q2)

All the T&M functionalities to meet service-level agreements (SLA) with customers.

- Packet-jitter measurement, for Ethernet transport network assessment
- Transparent LAN service (TLS) testing with wire-speed, full-duplex traffic-generation capabilities (up to 1000 Mb/s)
- Fully integrated functionality for assessing the performance of Ethernet transport networks
- Packet-jitter measurement for assessing the capability of Ethernet transport networks to transmit delay-sensitive traffic such as voice over IP (VoIP)
- Throughput, burstability (back-to-back), latency and frame loss measurements
- Remote control via the LAN connection under test, for end-to-end performance testing



FTB-8120/8130 SONET/SDH Analyzer

Combines advanced DSn/PDH, SONET/SDH and Next-Gen SONET/SDH test functions in a single unit.

- DS1/E1 to OC-192/STM-64 interfaces in a single module
- Advanced Ethernet-over-SONET/SDH testing using GFP, VCAT and LCAS



FTB-3930 MultiTest Module (OLTS)

Fully automated bidirectional loss tests in seconds for up to three wavelengths; automatic ORL and fiber-length measurements.

- 40 calibrated wavelengths
- 3- λ automated bidirectional loss, ORL and distance measurements
- User-configurable pass/fail thresholds
- Error-free testing: automatic wavelength recognition and no offset nulling required





A SOUND INVESTMENT

EXFO designed the FTB-200 for high performance and lasting value. Thanks to **backward compatibility** of the modules and **connectivity options**, this platform guarantees an excellent return-on-investment (ROI). The FTB-200 is:

- Future-proof—compatible with future module designs
- Optimized for transferring information, acquiring upgrades, etc.
- Backward compatible with the FTB-7000B-B/C OTDRs and FTB-3930 MultiTest Module

BRINGING LIGHTWEIGHT ROBUSTNESS TO THE FIELD

The rugged FTB-200 provides readable results on your screen whether you are testing indoors under artificial light, or testing outdoors with the sun shining directly on your screen. Other features include:

- Lightweight construction (2.25 kg/4.96 lb with standard features)
- Touchscreen resistant to shock, water, dust and common chemicals
- Rugged design meeting GR-196-CORE
- Extended battery life of more than 8 hours for the OTDR
- Door panels for extra port protection

POWERING UP WITH EXTENSIVE CONNECTIVITY

Windows CE

Technicians can trust the proven technology of the compact, yet powerful Windows CE/Mobile operating system. This developer-friendly environment allows EXFO to rapidly modify, enhance and deploy new versions and features of our testing equipment software according to evolving customer requirements.

- USB AutoSync data transfer and USB memory sticks
- Compact flash (Wi-Fi, memory and Bluetooth)
- Built-in RJ-45

The FTB-200 also offers the following hardware options:

- Built-in PM-200 power meter
- Visual fault locator (VFL)
- Fiber inspection probe

TOTAL PLATFORM SOLUTIONS

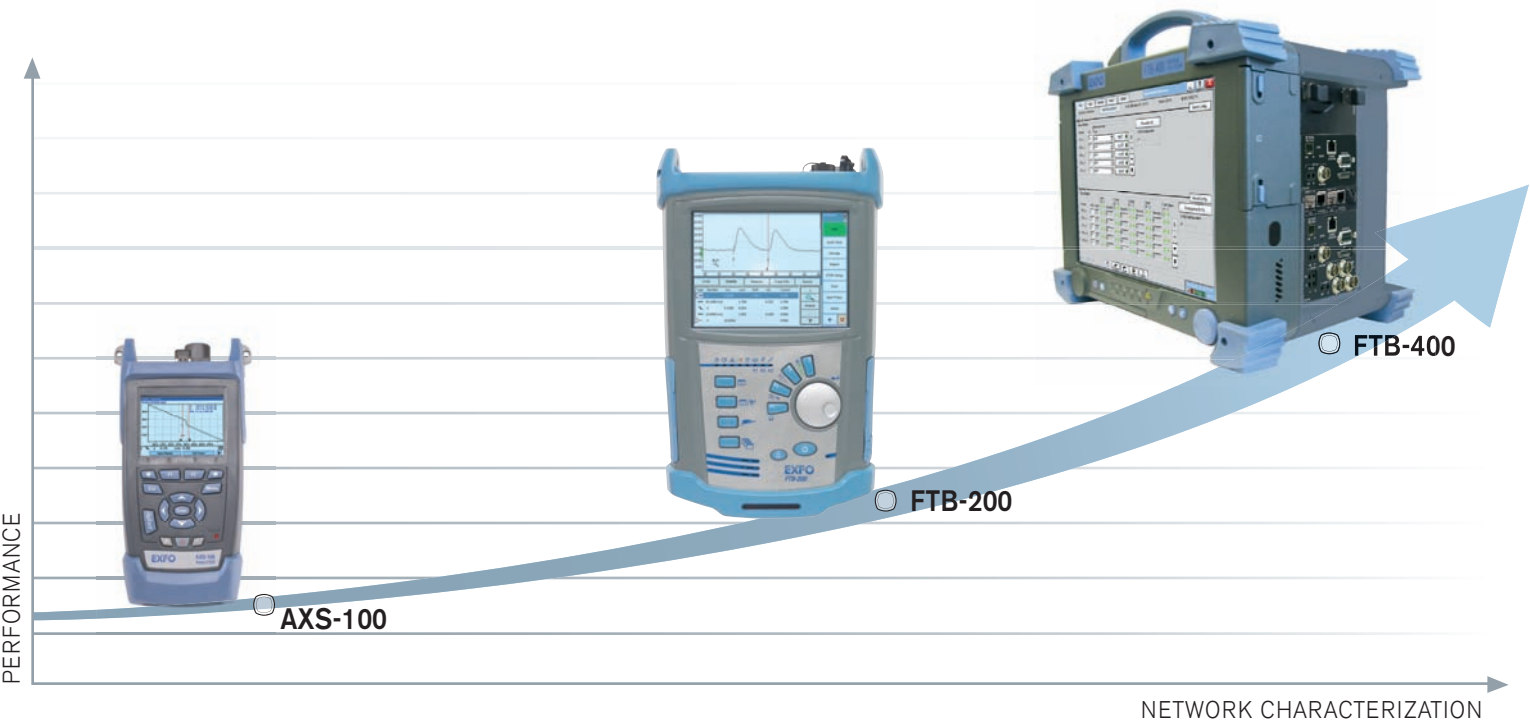
The FTB-400, the industry's leading all-in-one universal test platform, is the most complete testing solution available. Expanding EXFO's platform family, the smaller, more compact FTB-200 is optimized for metro/access and FTTx network testing. The FTB-200 uses interchangeable modules and offers much of the same features and test functions of the FTB-400. The lightweight FTB-200 is the only portable testing platform worthy of the supertech.



EXFO'S TEST PERFORMANCE CONTINUUM

WHATEVER YOUR NETWORK TESTING REQUIREMENTS,

EXFO delivers solutions
THAT MEET YOUR DAY-TO-DAY T&M NEEDS.



Corporate Headquarters > 400 Godin Avenue, Vanier (Quebec) G1M 2K2 CANADA | Tel.: 1 418 683-0211 | Fax: 1 418 683-2170 | info@exfo.com
Toll-free: 1 800 663.3936 (USA and Canada) | www.exfo.com

EXFO America	3701 Plano Parkway, Suite 160	Plano, TX 75075 USA	Tel.: 1 800 663-3936	Fax: 1 972 836-0164
EXFO Europe	Le Dynasteur, 10/12 rue Andras Beck	92366 Meudon la Forêt Cedex FRANCE	Tel.: +33.1.40.83.85.85	Fax: +33.1.40.83.04.42
EXFO Asia-Pacific	151 Chin Swee Road, #03-29 Manhattan House	SINGAPORE 169876	Tel.: +65 6333 8241	Fax: +65 6333 8242
EXFO China	No.88 Fuhua, First Road Central Tower, Room 801, Futian District	Shenzhen 518048, CHINA	Tel.: +86 (755) 8203 2300	Fax: +86 (755) 8203 2306

EXFO is certified ISO 9001 and attests to the quality of these products. This device complies with Part 15 of the FCC Rules. Operation is subject to the following two conditions:
(1) this device may not cause harmful interference, and (2) this device must accept any interference received, including interference that may cause undesired operation. EXFO has made every effort to ensure that the information contained in this specification sheet is accurate. However, we accept no responsibility for any errors or omissions, and we reserve the right to modify design, characteristics and products at any time without obligation. Units of measurement in this document conform to SI standards and practices. Contact EXFO for prices and availability or to obtain the phone number of your local EXFO distributor.